

American Innovations' (AI) **Allegro MX Field Data PC** is an expandable and versatile field computer that was **created specifically to meet the demands of the oil and gas pipeline industry**. Utilized by pipeline industry leaders to capture required, critical pipeline and facility data, Allegro units typically pay for themselves in less than a year by saving data collection and transcription time and eliminating errors associated with manual data entry.

Allegro MX Benefits

Allegro MX Field Data PC is a must for companies in the oil and gas pipeline industry.

- 100% compatible with AI's PCS Software (*Versions 6 and 7*)
- Ideal for Periodic and Close interval surveys using the integrated full functional volt meter
- GPS data collection and GIS data verification
- Intuitive and easy-to-use for all levels of corrosion expertise
- Range checking and validation lists to ensure accuracy of data
- Works with standard and GPS synchronized current interrupters



The **Allegro MX** is the newest generation of field data PC and features a faster than ever processor operating on the latest Windows Mobile® 6.1 Classic operating system (including Microsoft Office®, Outlook® and Explorer® suite). Color and B&W display options available. It is compatible with any external GPS, standard WAAS or sub-meter that outputs a NEMA format. Many use the compatibility with modern mapping and graphical display software for Waypoint creation, definition and navigation. It works with standard and GPS synchronized current interrupters and is 100% compatible with Version 6 and 7 of AI's **Pipeline Compliance System Software (PCS)**.

For more information, contact:

Christopher Shawhan, Regional Sales Manager
christopher.s@aiworldwide.com ph: (512) 810-0235

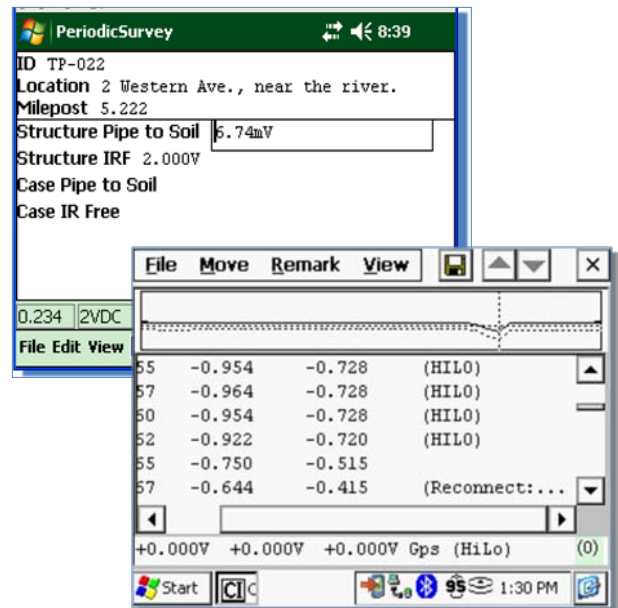
Allegro MX Features

Periodic Survey Software:

- Collect Data on Multiple Facility Types
- Display previously collected data
- Display site list of inspection points
- Upload or download custom & standard routes from PCS Software (CPDM module)

Close Interval Survey Software:

- Reads fast cycle surveys (800ms On / 200ms Off) – cycle time specified by user
- Instant Off delay eliminates read capture during anodic spike
- Graphical display of collected data: on, on/off, native survey (Can display DC waveform)
- Standard export to database
- GPS Time Synchronization Software for precise time-controlled signal sync



Allegro MX Specifications

Processor: 624 MHz PXA270 processor

Operating System and Software: Windows Mobile® 6 Classic, Microsoft® Office Mobile, Multiple Languages

Memory and Data Storage: 128 MB RAM, 1GB or 2GB internal storage options, PCMCIA slot (Type I or Type II 16-bit), Micro SD/SDHC slot

Display Options:

- Color Display: 3.8" (96mm) QVGA (320 X 240) daylight readable transreflective color LCD
 - Monochrome Display: 4.1" (104mm) QVGA (320 X 240) high visibility monochrome LCD
- Display heater for cold extremes

Keyboard: 62-key full alpha & numeric keyboard, large keys color coordinated by function, dual purpose Windows Mobile® or application function keys, removable keyboard bezel for easy cleaning

Ports

- Full size USB host - A
- Mini USB client – B
- Com I, RS-232C 9-pin subD with 5VDC on DTR pin
- 12VDC power in, 10-18V unregulated

Physical: Size 10" high X 5.25" wide at display X 1.5" deep 3.1" wide at narrowest point (256mm X 133mm X 79mm), Wt. 1.8 lbs (840g)

Environmental: IP 67 waterproof and dustproof, Operating temp: -22F to 130F (-30 to 54C), Storage temp: – 30F to 140F (-35 to 60C), tested to MIL-STD 810F for water, humidity, sand and dust, vibration, attitude, shock and temperature

Power

- Rechargeable 4000mAh NiMH battery
- Run time is 10 to 20 hours depending on use
- Fully charged in four hours
- Real Time Clock keeps correct date and time, even during long term battery removal

Wireless Connectivity Options: Bluetooth® wireless technology 2.0+EDR, Class I, range 30 feet (10 meters), 802.11 b/g US and International Wi-Fi options

Certifications: FCC Class B, CE Mark, EN60950, RoHS compliant

Standard Accessories: 4000 mAh NiMH battery, Styli-pen and mini, 100-240 V AC power supply US plug, documentation CDs, USB synch cable, hand strap and shoulder strap

Optional Accessories: USB/Power Dock, 12 VDC vehicle charger, International charger kit includes US, EU, Australia, & UK plugs, Expansion pods for GPS, bar code scanner, National Instruments DAQ, radio modem and OEM development.